

# WHO LIVES HERE?

To help us better understand Terrace Bay and Schreiber's population, we compiled a list of social and economic factors that influence people's health. These are often referred to as the social determinants of health (SDOH). The SDOH can have more influence on overall health than lifestyle choices or health care.

There are **2,670** people living in Terrace Bay & Schreiber.



**20%** are adults over the age of 65

**9%** identify as Indigenous

**6%** speak a non-English first language

**10%** do not have a high school diploma

**10%** are unemployed

**10%** are living with low-income

**35%** are living alone

## Among households...

**12%** spend +30% of their income on shelter

**45%** have children

**15%** have children and youth living within low-income

**9%** are lone-parent families

For information about this data, visit [tbdhu.com/district](http://tbdhu.com/district).

# HOW HEALTHY IS THE COMMUNITY?

To help us better understand the health status of Terrace Bay & Schreiber's population, we gathered various health indicators. Health indicators can support us in monitoring the population's health over time. They can also help service providers to take action when needed.

## Child and family health



**39%** of children are not meeting developmental expectations

**11%** of 4- and 5-year-olds have had an eye exam

**17%** of pregnancies are among women under the age of 20

**43%** of pregnant women smoke

**46%** of mothers breastfeed at discharge

**44%** of pregnant women have mental health concerns

## Substance use and mental health



**30%** of adults experience mental illness

**13%** of adults experience mental and behavioral disorders due to substance use

**25%** of prescriptions are for opioids

**1.2 per 1,000:** 3-year rate of emergency department visits for self-harm injuries

## Chronic diseases and injuries



**13%** of adults have asthma

**15%** of adults have diabetes

**25%** of adults have high blood pressure

**462.6 per 1,000:** 4-year rate of new diagnoses of all malignant cancers

**297.3 per 1,000:** 6-year rate of deaths from cancer

**44%** of eligible women are overdue for breast cancer screening

**42%** of eligible women are overdue for cervical cancer screening

**47%** of eligible men are overdue for colorectal cancer screening

**52.7 per 1,000:** Rate of emergency department visits for injuries due to falls

**10.4 per 1,000:** Rate of emergency department visits for MVC injuries

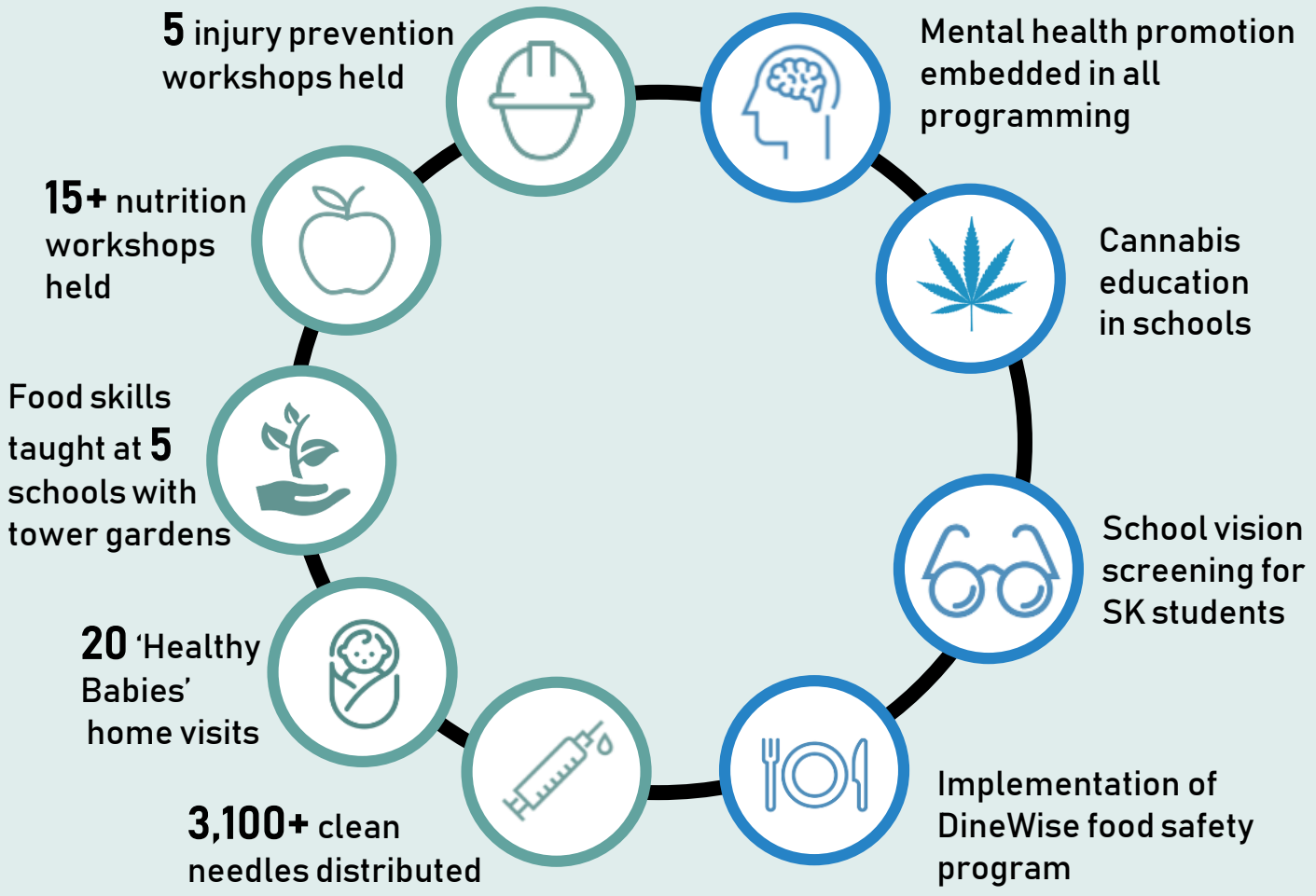
For information about this data, visit [tbdhu.com/district](http://tbdhu.com/district).

# WHAT DOES PUBLIC HEALTH DO HERE?

To describe the role of public health in Terrace Bay & Schreiber, we summarized current and future activities carried out by the Thunder Bay District Health Unit in these communities.

## 2018 Highlights...

## New in 2019/20...



*We all benefit from local public health.*