

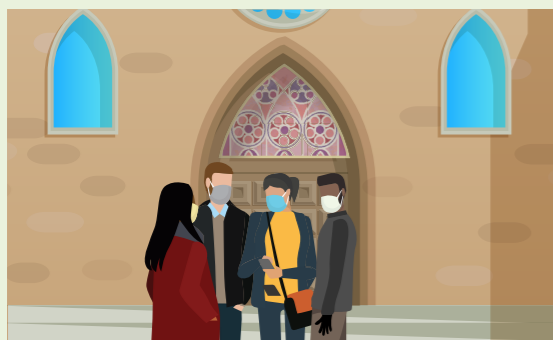
WHO IS A CLOSE CONTACT?

CLOSE CONTACT

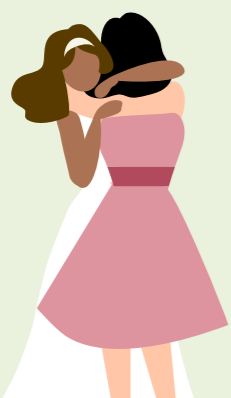
You were within 6 feet/2 metres for 15 minutes or more.



You had multiple close encounters with someone over a 24-hour period (even if each was less than 15 minutes).



You had close physical contact with the person, such as a hug.



You live or provide care in the same home.

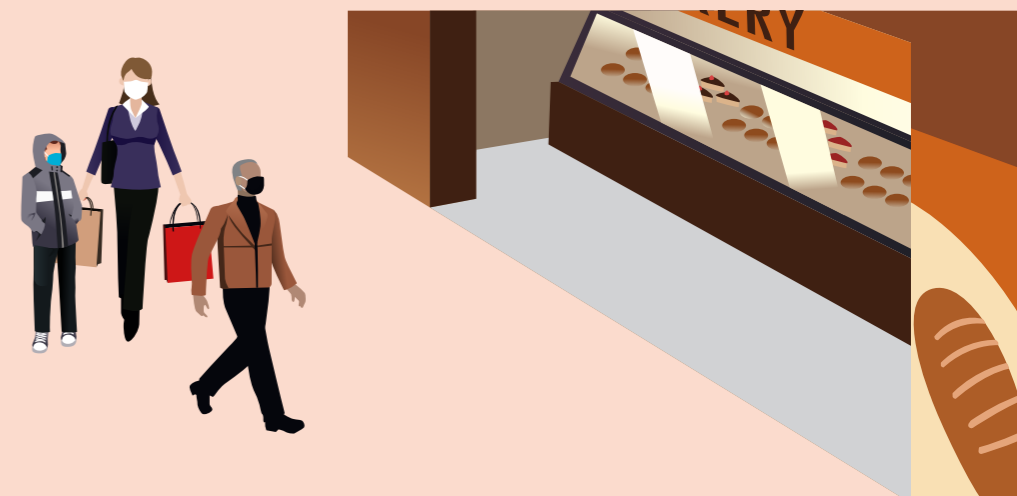


NOT A CLOSE CONTACT

You had brief close contact while wearing a mask and/or with a barrier in place.



You passed someone quickly.



You greeted someone and kept your distance.



You made a delivery to someone who was self-isolating but had no contact with them.

